

Photobiological Safety Test Report

Product informations

Product Name:

Product SN:

Made by:

Sent by:

Photobiological Safety

Blue Light Hazard: RG2

 $L_b(100\text{mrad})=1683.9\text{W}/\text{m}^2/\text{sr}$ $L_b(11\text{mrad})=20402.1\text{W}/\text{m}^2/\text{sr}$ $L_b(1.7\text{mrad})=22459.0\text{W}/\text{m}^2/\text{sr}$

Retinal Thermal Hazard: RG0

 $L_r(11\text{mrad})=242966.2\text{W}/\text{m}^2/\text{sr}$ $L_r(1.7\text{mrad})=267461.2\text{W}/\text{m}^2/\text{sr}$

Retinal Thermal Hazard – weak visual stimulus: RG0

 $L_{ir}(11\text{mrad})=35.6\text{W}/\text{m}^2/\text{sr}$

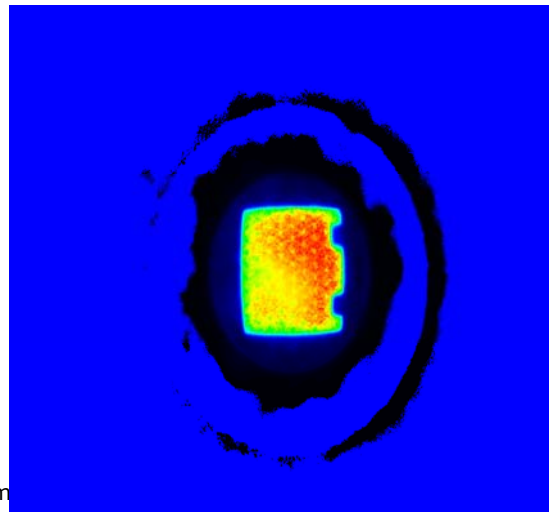
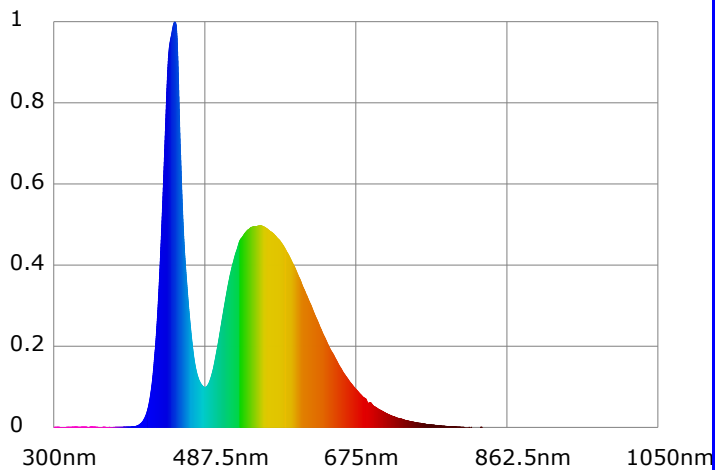
Angular subtense of apparent source:

 $\alpha=32.4\text{mrad}$

Blue light hazard efficacy of luminous radiation:

 $K_B,V=9.82\text{e-}04$

Low blue light display test: NA

 $B_r=9.57\text{e-}04$ 

Test Information

Ref. Standard: IEC62471,GBT20145

Wavelength range: 300nm-1050nm

Measure distance(mm): 200.0

Stablization Time(min): 10

Condition: T=°C,R.H.=%

Test Lab: Lisun Group

Tested by:

Test Device: LISUN EN62471-P

Test Time: 4/24/2022 11:12:26 AM

Approved by: