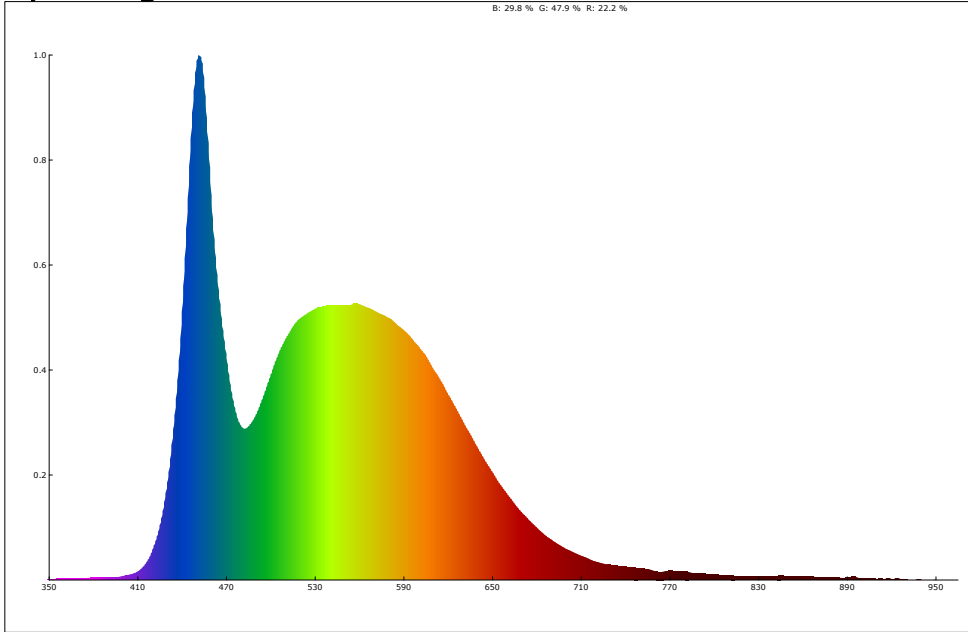
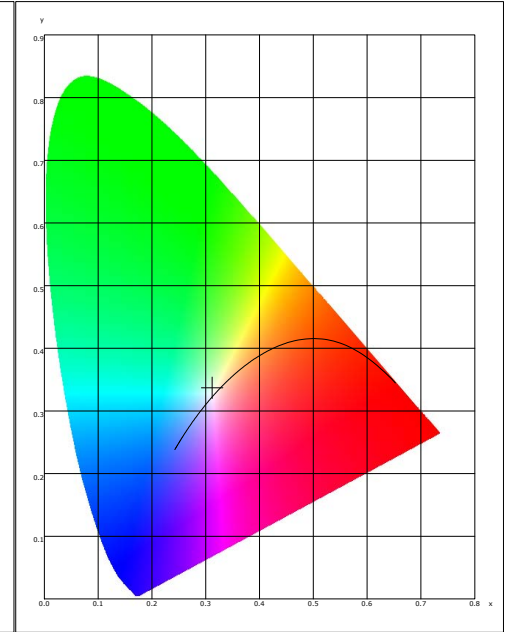


LED Test Report

Spectrogram



CIE1931



Color Parameter:

x: 0.3118      y: 0.3367      u: 0.1944      v: 0.3148      u': 0.1944      v': 0.4722  
 CCT: 6499 K      R\_ratio: 22.2 %      G\_ratio: 47.9 %      B\_ratio: 29.8 %

Ra: 82.8      AvgR: 75.3  
 R1: 79.8      R2: 87.4      R3: 92.2      R4: 81.4      R5: 80.9      R6: 83.1      R7: 88.9      R8: 69.2  
 R9: 4.5      R10: 70.1      R11: 80.1      R12: 58.7      R13: 82.0      R14: 95.9      R15: 74.7

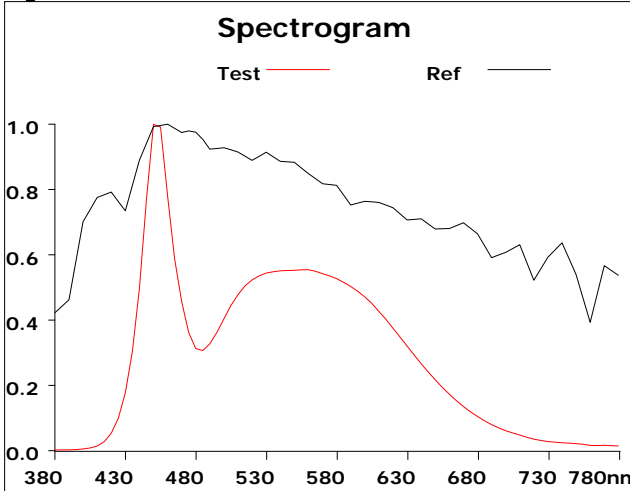
|                                      |   |  |  |
|--------------------------------------|---|--|--|
| Illum: 10811.785 lx                  | PeakWave: 452.4 nm                                | CentralWave: 453.9 nm                              | DominantWave: 493.7 nm                             |
| CentroidWave: 544.1 nm               | HalfWidth: 26.2 nm                                | DarkSignal: 1880.0                                 | PeakSignal: 55532.0                                |
| purity: 7.1 %                        | IntegTime: 14.2 ms                                | SDCM: 1.0  | AvgR: 75.3   |
| duv: 0.00748                         | Ee: 3.5 mW/cm <sup>2</sup>                        | fc: 1001.1   | S/P: 2.2   |
| CIE1931 X: 14630.0                   | CIE1931 Y: 15797.1                                | CIE1931 Z: 16490.3                                 | CQS: 85.5  |
| Rg: 93.2                             | Rf: 81.9  | BRisk: 1.0   | YPFD: 131.563 umol/m <sup>2</sup> /s               |
| PPFD: 154.815 umol/m <sup>2</sup> /s | PPFD(400-700nm): 154.815 umol/m <sup>2</sup> /s   | PPFD <sub>450</sub> : 0.186 umol/m <sup>2</sup> /s | PPFD <sub>b</sub> : 44.031 umol/m <sup>2</sup> /s  |
| PPFDg: 72.385 umol/m <sup>2</sup> /s | PPFD <sub>r</sub> : 38.400 umol/m <sup>2</sup> /s | PPFD <sub>fr</sub> : 4.445 umol/m <sup>2</sup> /s  | PPFD <sub>dir</sub> : 0.537 umol/m <sup>2</sup> /s |
| Ep: 35.308 w/m <sup>2</sup>          | E(400-700nm): 34.213 w/m <sup>2</sup>             | Euv: 0.059 w/m <sup>2</sup>                        | Eb: 11.383 w/m <sup>2</sup>                        |
| Eg: 15.638 w/m <sup>2</sup>          | Er: 7.192 w/m <sup>2</sup>                        | Efr: 0.722 w/m <sup>2</sup>                        | Eir: 0.314 w/m <sup>2</sup>                        |
| Ech-A: 2.889 w/m <sup>2</sup>        | Ech-B: 1.960 w/m <sup>2</sup>                     | PAR: 34.213 w/m <sup>2</sup>                       | Erb Ratio: 0.631                                   |
| Erfr Ratio: 9.756                    | KPARV: 1.70161 umol/m <sup>2</sup> /s/Klx         | PUR: 24.4 w/m <sup>2</sup>                         | Tmax: 10.7 S                                       |
| Kbv: 0.9                             | EUVA) : 0.0 W/m <sup>2</sup>                      | B (λ) ) : 9.4 W/m <sup>2</sup>                     | EIR: 0.2 W/m <sup>2</sup> sr                       |
| R(λ) : 63.0 W/m <sup>2</sup> sr      | Transmittance: 100.0                              |  |  |

Product model: Lisun LMS-6000S  
 Product number: LED  
 Tester: Jacky  
 Remarks: N/A

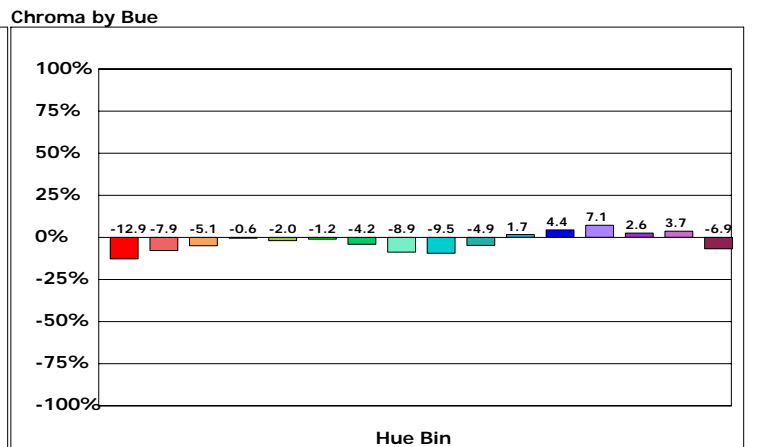
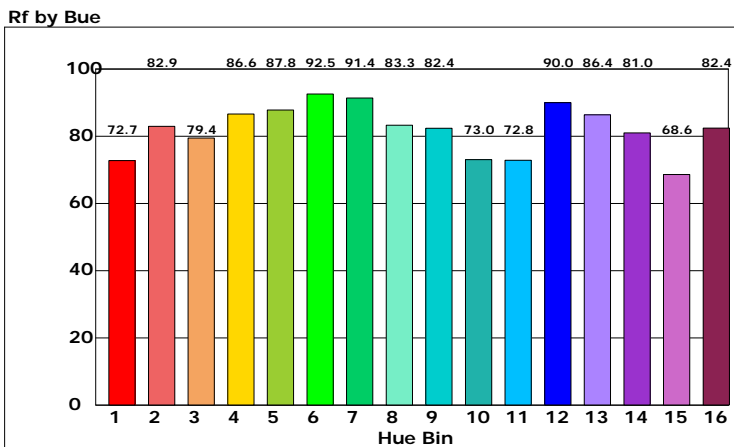
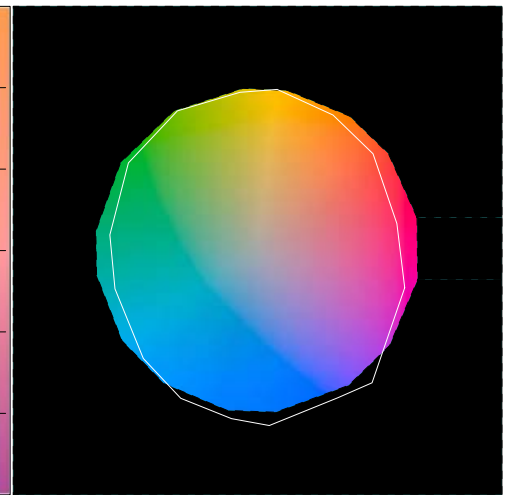
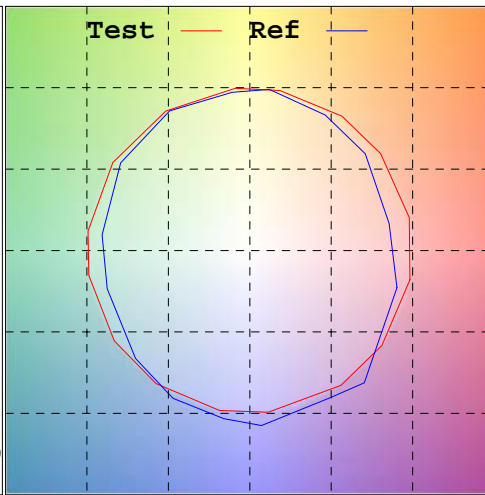
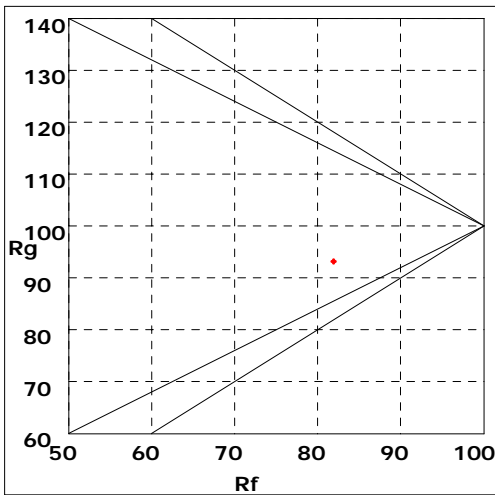
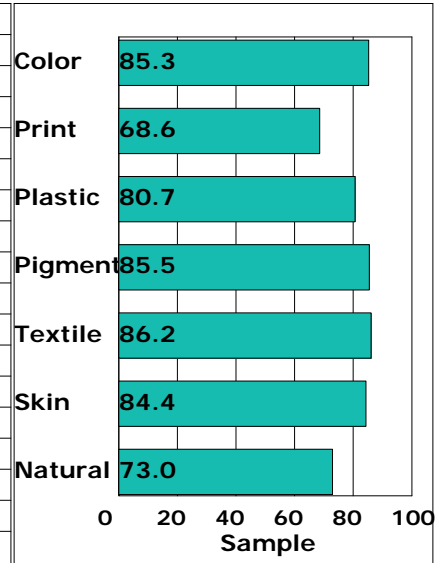
Manufacturer: LISUN GROUP  
 Test unit: LED  
 Date of observation: 20231013

### LED Test Report

Rf: 81.9 CCT: 6499K u': 0.1944  
 Rg: 93.2 LER: 0.0 Duv: 0.00748 v': 0.4722



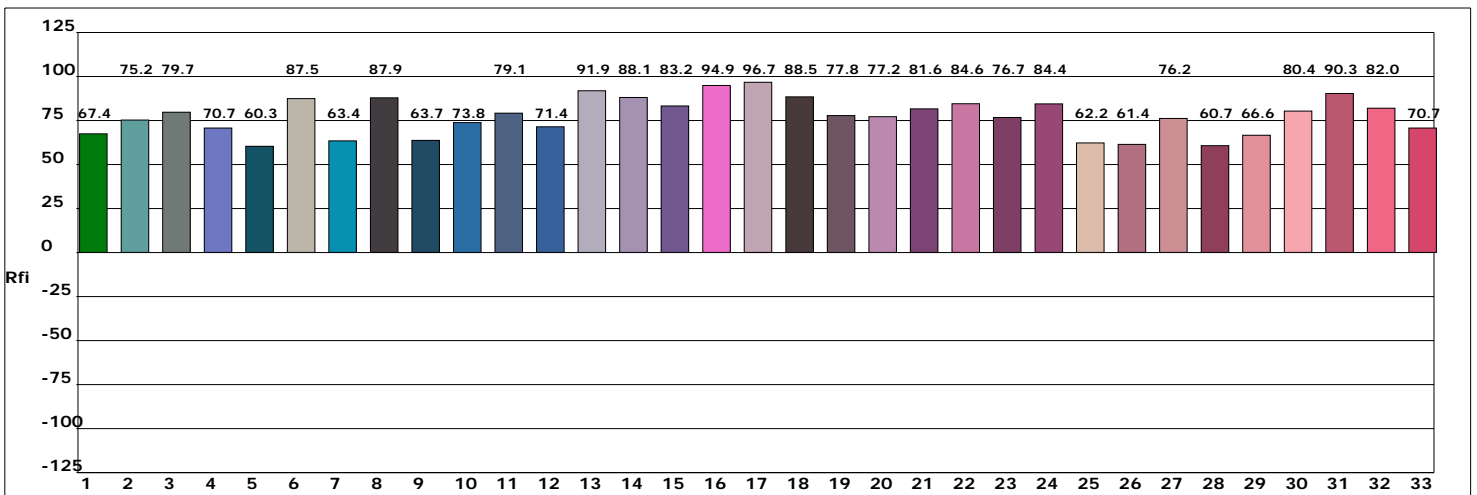
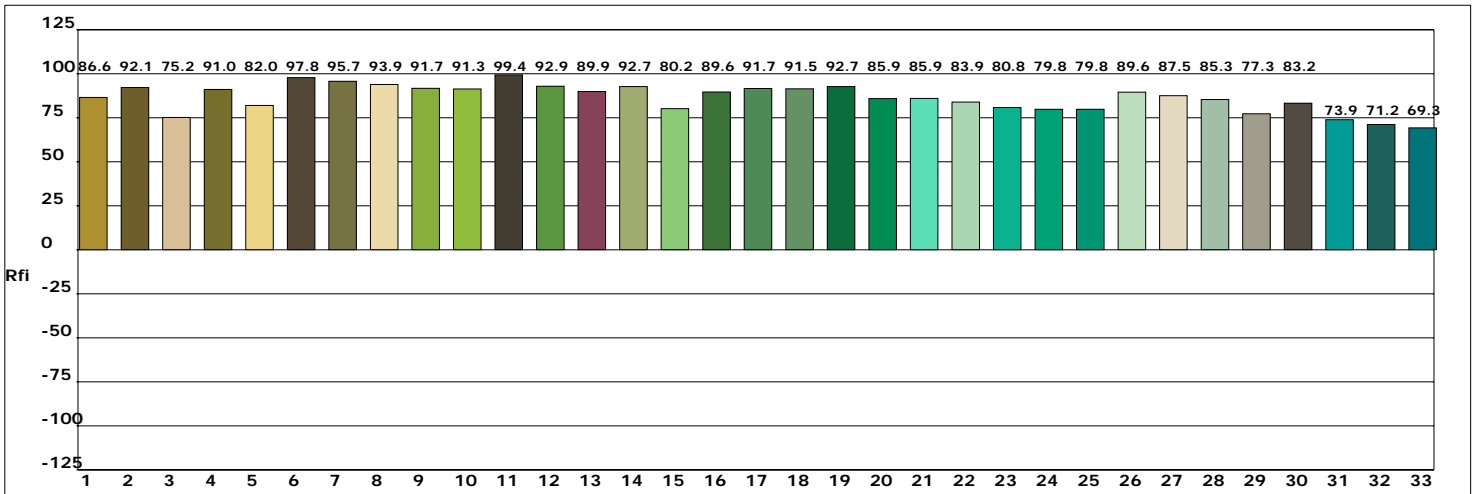
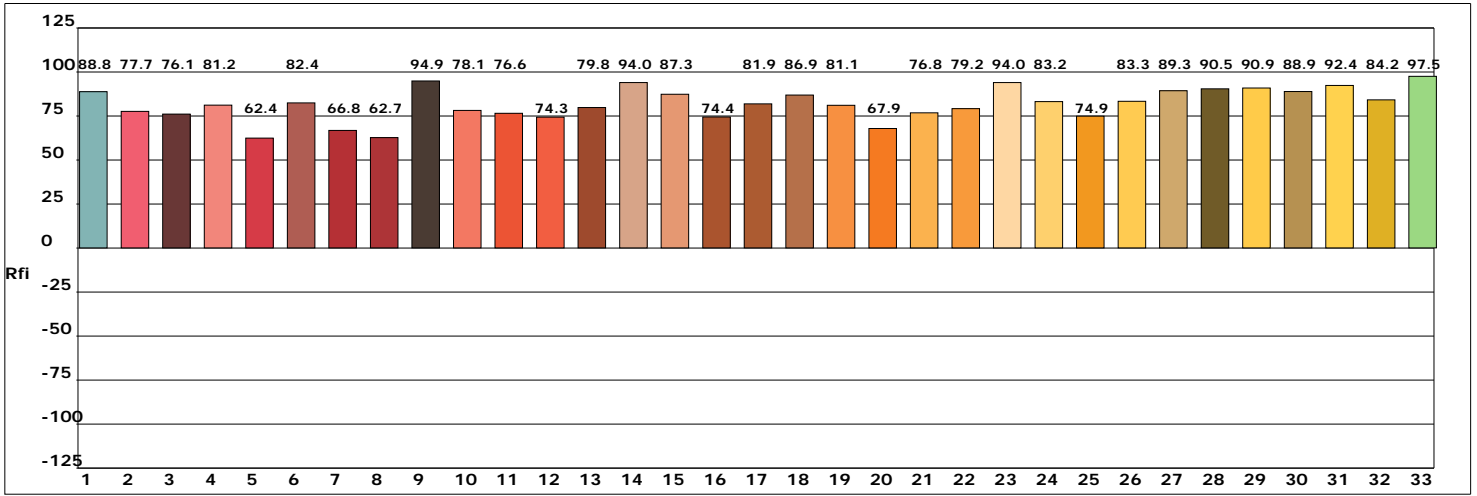
| Hue Bin | Rf   | Chroma | Hue    |
|---------|------|--------|--------|
| 1       | 72.7 | -12.9% | -1.1%  |
| 2       | 82.9 | -7.9%  | 5.1%   |
| 3       | 79.4 | -5.1%  | 8.9%   |
| 4       | 86.6 | -0.6%  | 6.4%   |
| 5       | 87.8 | -2.0%  | 2.3%   |
| 6       | 92.5 | -1.2%  | -2.0%  |
| 7       | 91.4 | -4.2%  | -2.5%  |
| 8       | 83.3 | -8.9%  | 0.6%   |
| 9       | 82.4 | -9.5%  | 10.2%  |
| 10      | 73.0 | -4.9%  | 16.3%  |
| 11      | 72.8 | 1.7%   | 13.6%  |
| 12      | 90.0 | 4.4%   | 3.5%   |
| 13      | 86.4 | 7.1%   | -5.6%  |
| 14      | 81.0 | 2.6%   | -9.9%  |
| 15      | 68.6 | 3.7%   | -25.0% |
| 16      | 82.4 | -6.9%  | -6.4%  |



Product model: Lisun LMS-6000S  
 Product number: LED  
 Tester: Jacky  
 Remarks: N/A

Manufacturer: LISUN GROUP  
 Test unit: LED  
 Date of observation: 20231013

### LED Test Report



Product model: Lisun LMS-6000S  
 Product number: LED  
 Tester: Jacky  
 Remarks: N/A

Manufacturer: LISUN GROUP  
 Test unit: LED  
 Date of observation: 20231013