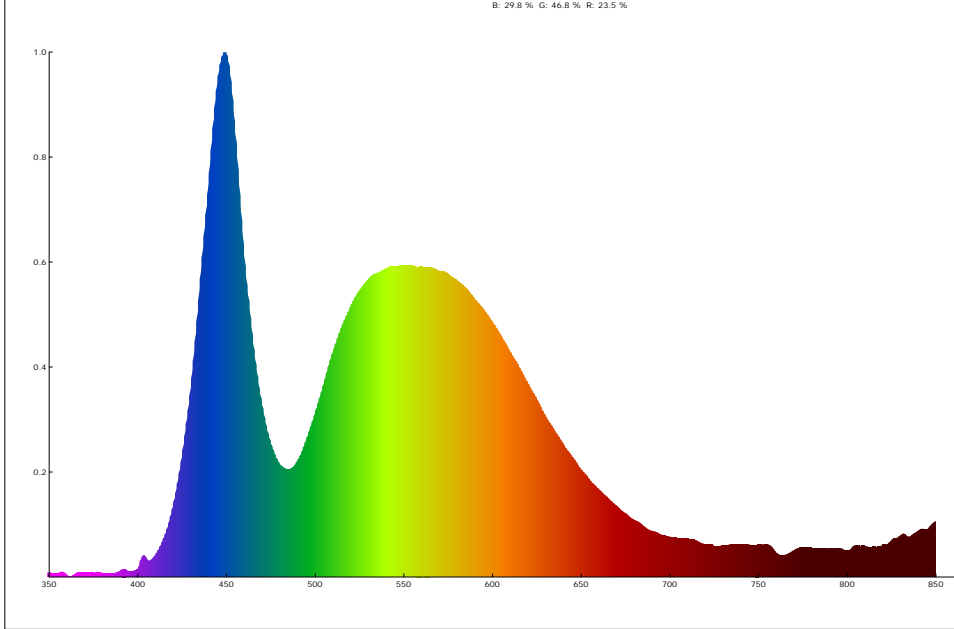
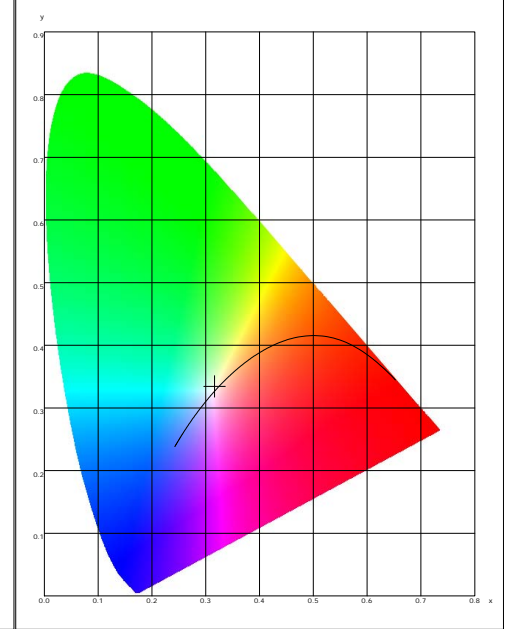


LED Test Report

Spectrogram



CIE1931



Color Parameter:

x: 0.3163 y: 0.3341 u: 0.1984 v: 0.3144 u': 0.1984 v': 0.4716
 CCT: 6281 K R_ratio: 23.5 % G_ratio: 46.8 % B_ratio: 29.8 %

Ra: 75.7 AvgR: 66.7
 R1: 73.3 R2: 78.9 R3: 82.1 R4: 76.7 R5: 75.0 R6: 72.7 R7: 83.7 R8: 63.7
 R9: -14.5 R10: 50.7 R11: 74.6 R12: 51.8 R13: 74.0 R14: 89.5 R15: 68.7

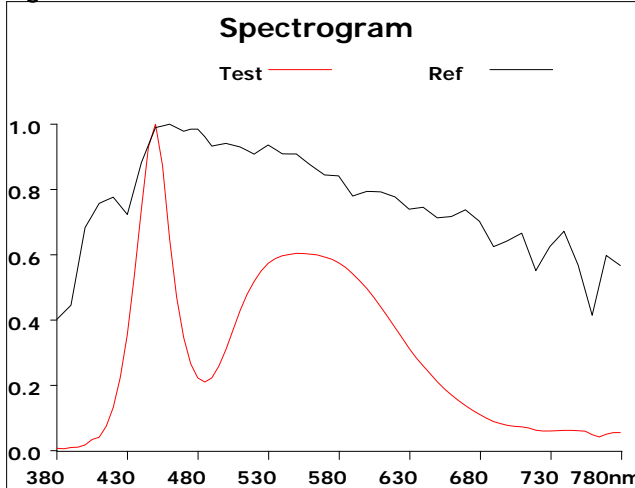
Illum: 227.827 lx	PeakWave: 449.5 nm	CentralWave: 448.9 nm	DominantWave: 492.3 nm
CentroidWave: 554.4 nm	HalfWidth: 29.3 nm	DarkSignal: 4413.0	PeakSignal: 53436.0
purity: 5.7 %	IntegTime: 1078.3 ms	SDCM: 3.2	AvgR: 67.7
duv: 0.00403	Ee: 0.8 w/m ²	fc: 21.1	S/P: 2.1
CIE1931 X: 315.1	CIE1931 Y: 332.9	CIE1931 Z: 348.3	CQS: 77.1
Rg: 94.6	Rf: 75.5	YPFD: 2.784 umol/m ² /s	PPFD: 3.246 umol/m ² /s
PPFD(400-700nm): 3.246 umol/m ² /s	PPFDuv: 0.008 umol/m ² /s	PPFDb: 0.903 umol/m ² /s	PPFDg: 1.548 umol/m ² /s
PPFDr: 0.795 umol/m ² /s	PPFDfr: 0.188 umol/m ² /s	PPFDi: 0.045 umol/m ² /s	Ep: 0.764 w/m ²
E(400-700nm): 0.703 w/m ²	Euv: 0.003 w/m ²	Eb: 0.231 w/m ²	Eg: 0.326 w/m ²
Er: 0.146 w/m ²	Efr: 0.030 w/m ²	Eir: 0.029 w/m ²	Ech-A: 0.068 w/m ²
Ech-B: 0.039 w/m ²	PAR: 0.703 w/m ²	Erb Ratio: 0.628	Erfr Ratio: 4.898
KPARV: 1.65531 umol/m ² /s/Klx	PUR: 0.5 w/m ²	Transmittance: 100.0	

Product model: Lisun LMS-6000P
 Product number: LED
 Tester: Jacky
 Remarks: N/A

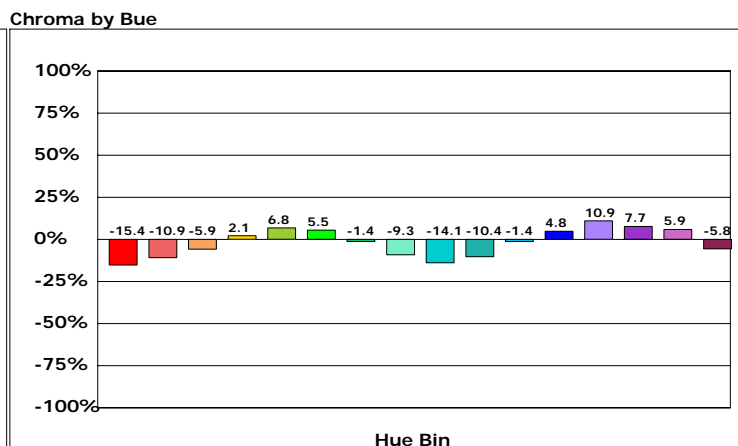
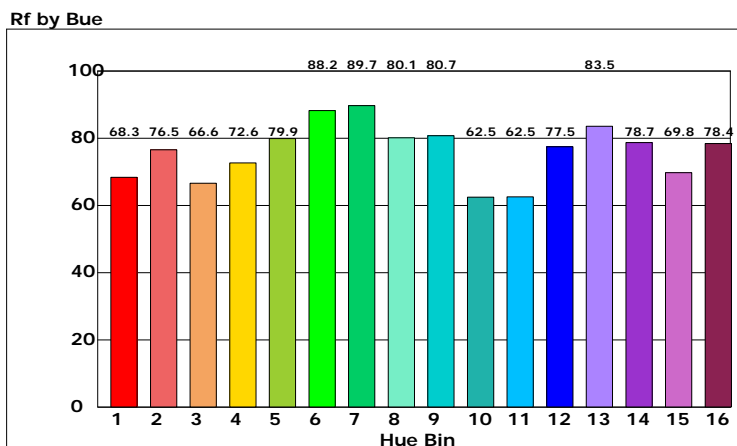
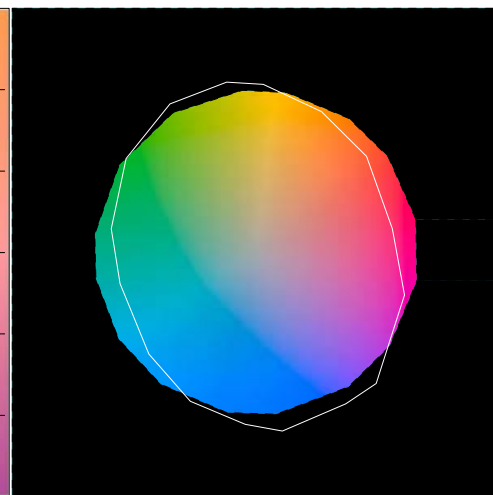
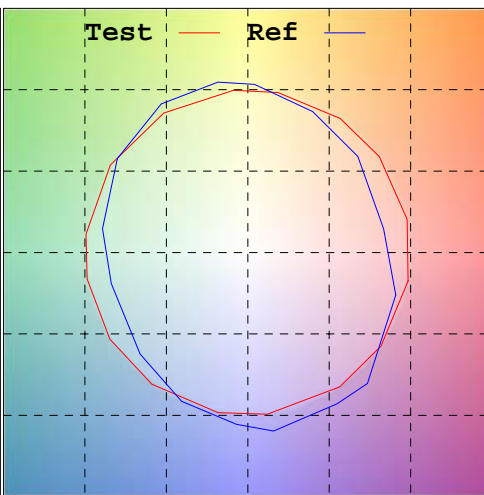
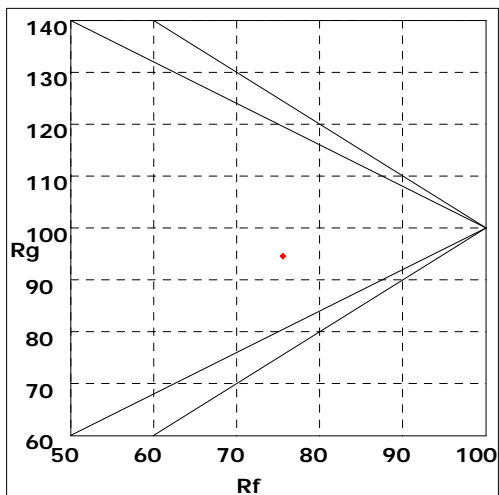
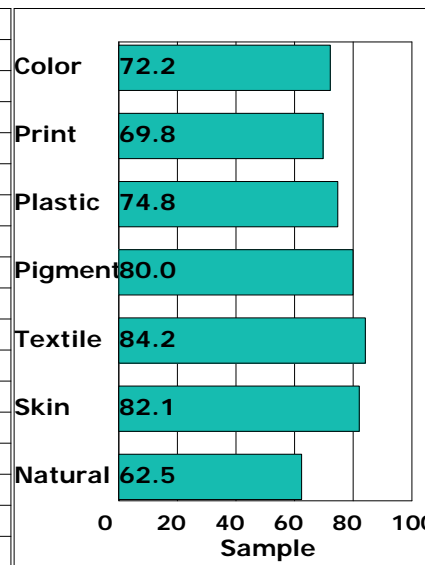
Manufacturer: LISUN GROUP
 Test unit: LED
 Date of observation: 20231101

LED Test Report

Rf: 75.5 CCT: 6281K u': 0.1984
 Rg: 94.6 LER: 0.0 Duv: 0.00403 v': 0.4716



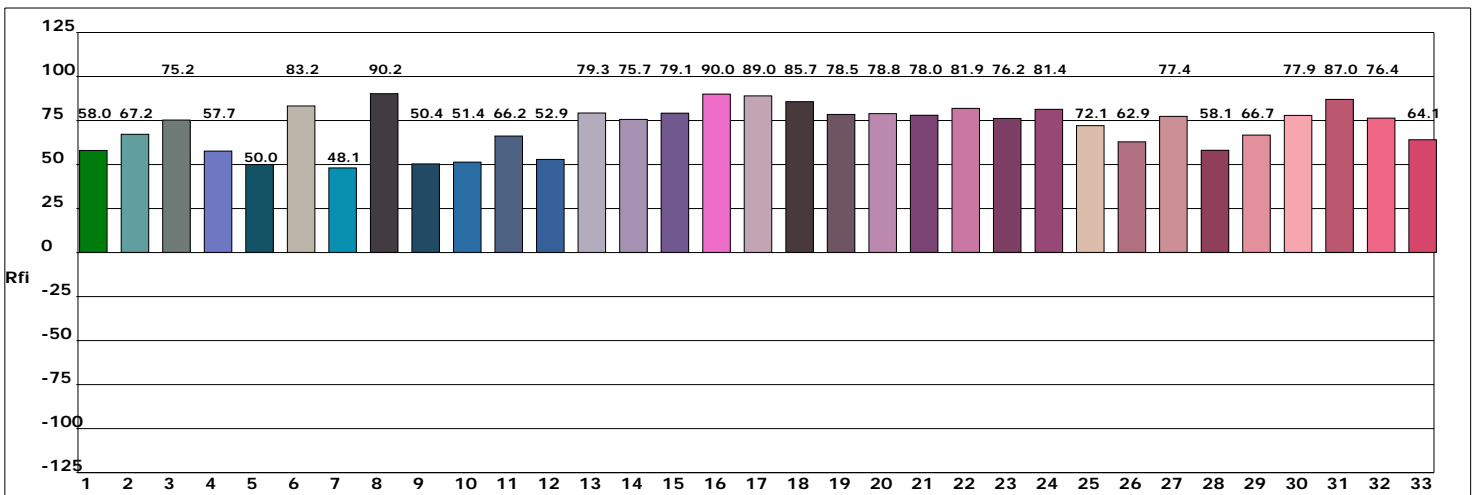
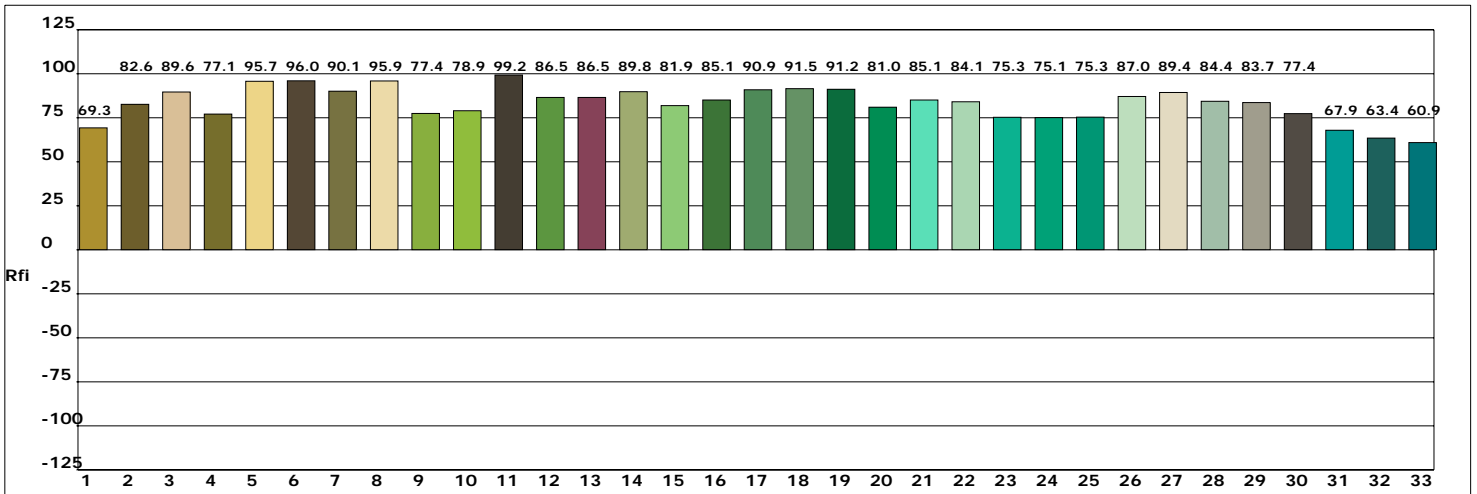
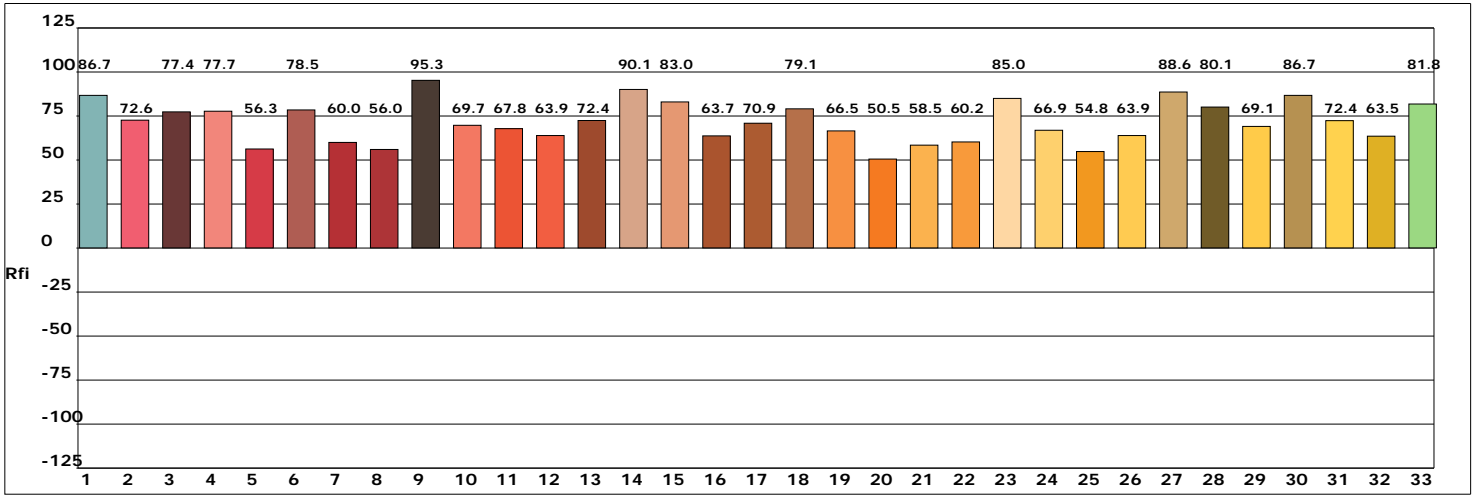
Hue Bin	Rf	Chroma	Hue
1	68.3	-15.4%	-2.8%
2	76.5	-10.9%	7.5%
3	66.6	-5.9%	16.4%
4	72.6	2.1%	15.1%
5	79.9	6.8%	8.5%
6	88.2	5.5%	-1.8%
7	89.7	-1.4%	-5.8%
8	80.1	-9.3%	-5.3%
9	80.7	-14.1%	5.7%
10	62.5	-10.4%	17.9%
11	62.5	-1.4%	21.0%
12	77.5	4.8%	12.5%
13	83.5	10.9%	1.8%
14	78.7	7.7%	-7.2%
15	69.8	5.9%	-23.8%
16	78.4	-5.8%	-10.0%



Product model: Lisun LMS-6000P
 Product number: LED
 Tester: Jacky
 Remarks: N/A

Manufacturer: LISUN GROUP
 Test unit: LED
 Date of observation: 20231101

LED Test Report



Product model: Lisun LMS-6000P
 Product number: LED
 Tester: Jacky
 Remarks: N/A

Manufacturer: LISUN GROUP
 Test unit: LED
 Date of observation: 20231101