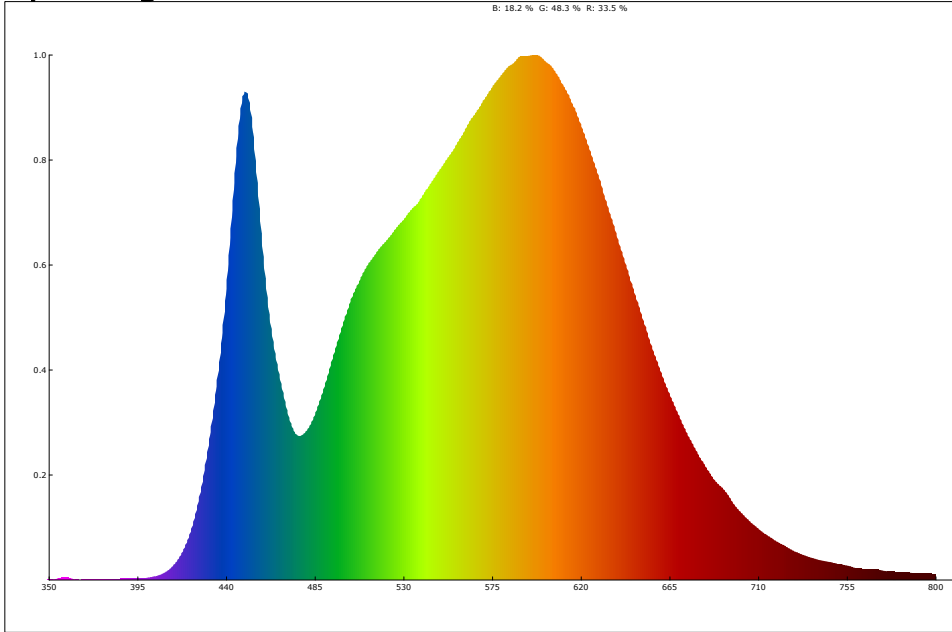
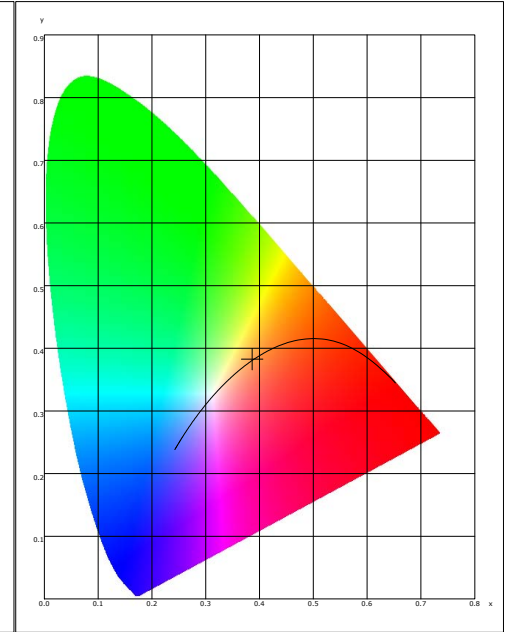


LED Test Report

Spectrogram



CIE1931



Color Parameter:

x: 0.3864 y: 0.3824 u: 0.2268 v: 0.3366 u': 0.2268 v': 0.5049
 CCT: 3903 K R_ratio: 33.5 % G_ratio: 48.3 % B_ratio: 18.2 %

Ra: 82.7 AvgR: 76.2
 R1: 80.4 R2: 88.5 R3: 95.0 R4: 82.2 R5: 81.5 R6: 85.5 R7: 85.7 R8: 63.3
 R9: 6.4 R10: 73.6 R11: 81.3 R12: 66.2 R13: 82.1 R14: 97.3 R15: 74.0

Illum: 73181.148 lx	PeakWave: 596.6 nm	CentralWave: 575.5 nm	DominantWave: 579.0 nm
CentroidWave: 565.1 nm	HalfWidth: 150.3 nm	DarkSignal: 4314.0	PeakSignal: 52338.0
purity: 30.7 %	IntegTime: 6.6 ms	SDCM: 2.2	AvgR: 76.2
duv: 0.00089	Ee: 81.6 w/m ²	fc: 6776.0	S/P: 1.6
CIE1931 X: 39728.9	CIE1931 Y: 39320.4	CIE1931 Z: 23764.6	CQS: 81.4
Rg: 96.0	Rf: 82.9	Tmax: 6.3 S	BRisk: 1.0
Kbv: 0.6	EUVA) : 0.0 W/m ²	B (λ)) : 15.9 W/m ²	EIR: 0.1 W/m ² sr
R(λ) : 124.7 W/m ² sr	Eavg: 73181.1 lx	Emax: 87386.3 lx	Emin: 55525.4 lx
SamplingTime: 50.0 ms	FluctuationDepth: 21.7 %	FlickerPercent: 22.2	FlickerIndex: 0.1
FlickerFrequency: 100.1 Hz	FlickerIndex: 21.7	MD: 21.7	Transmittance: 100.0

Electrical parameters:

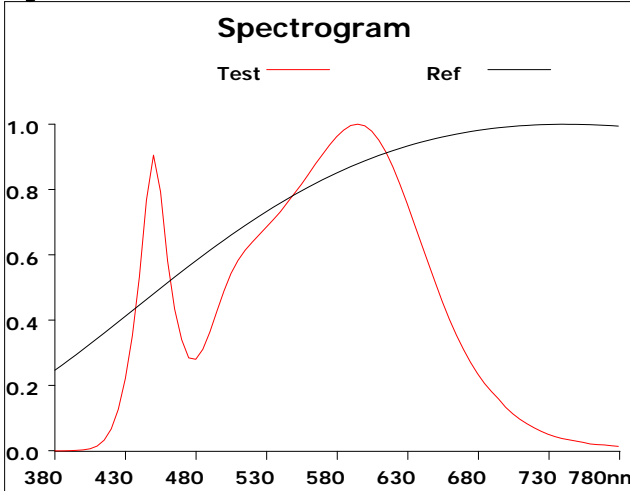
Efficacy = 0.000 Efficiency = 0.000 IEffi = G
 U = V I = A P = W PF =

Product model: Lisun LMS-6000BL
 Product number: LED
 Tester: Jacky
 Remarks: N/A

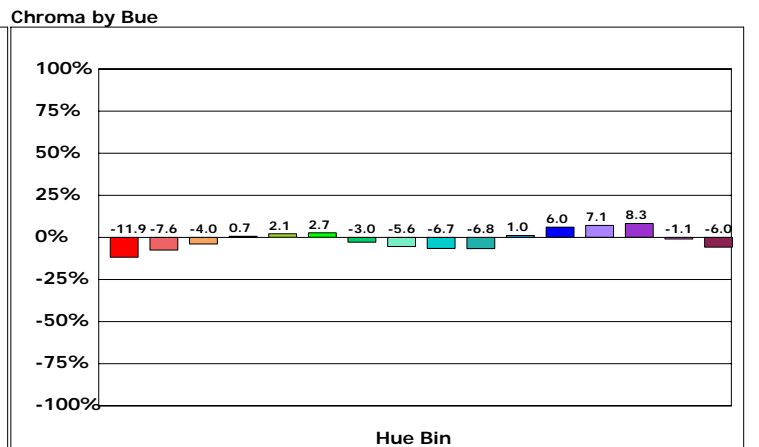
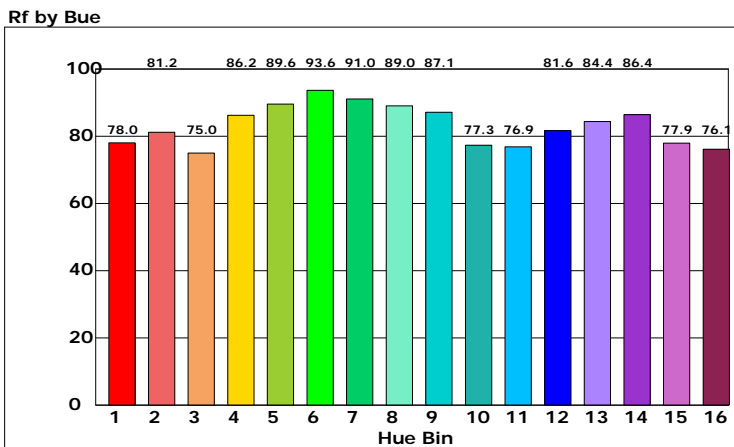
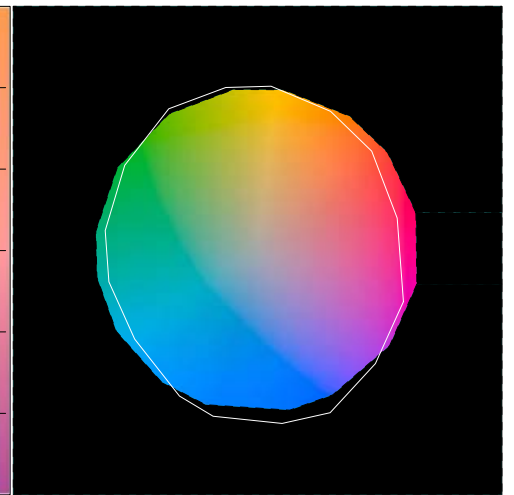
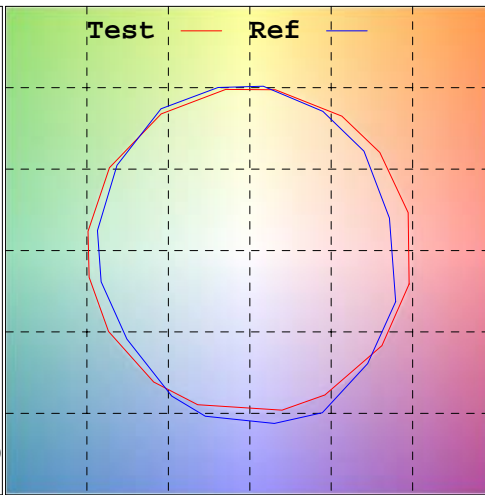
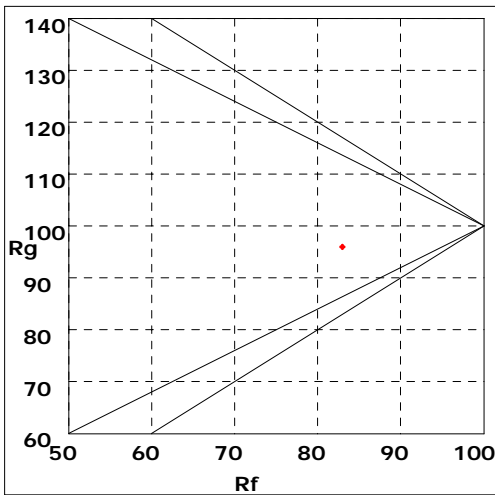
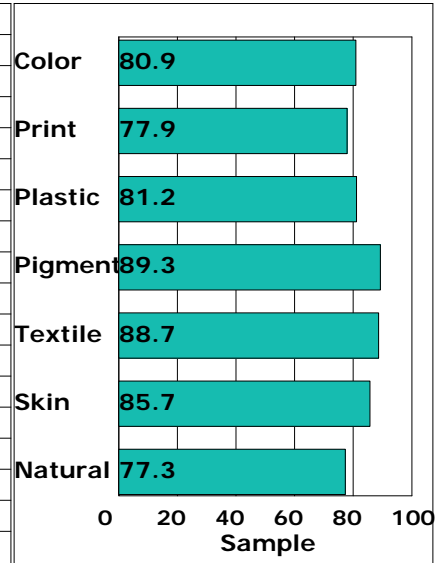
Manufacturer: LISUN GROUP
 Test unit: LED
 Date of observation: 20231013

LED Test Report

Rf: 82.9 CCT: 3903K u': 0.2268
 Rg: 96.0 LER: 0.0 Duv: 0.00089 v': 0.5049



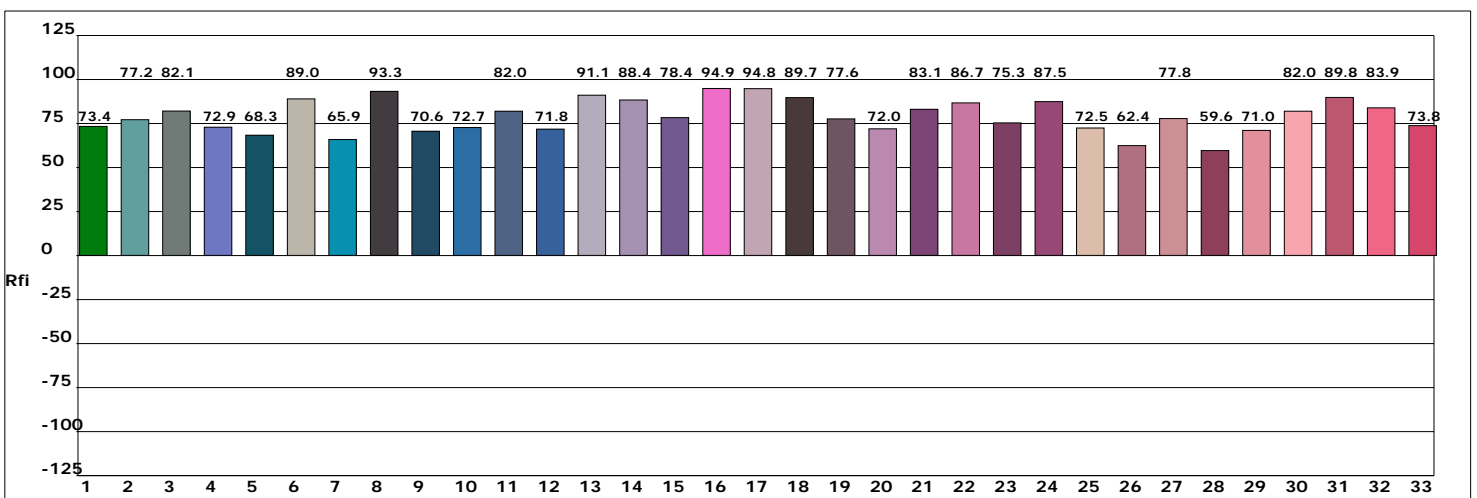
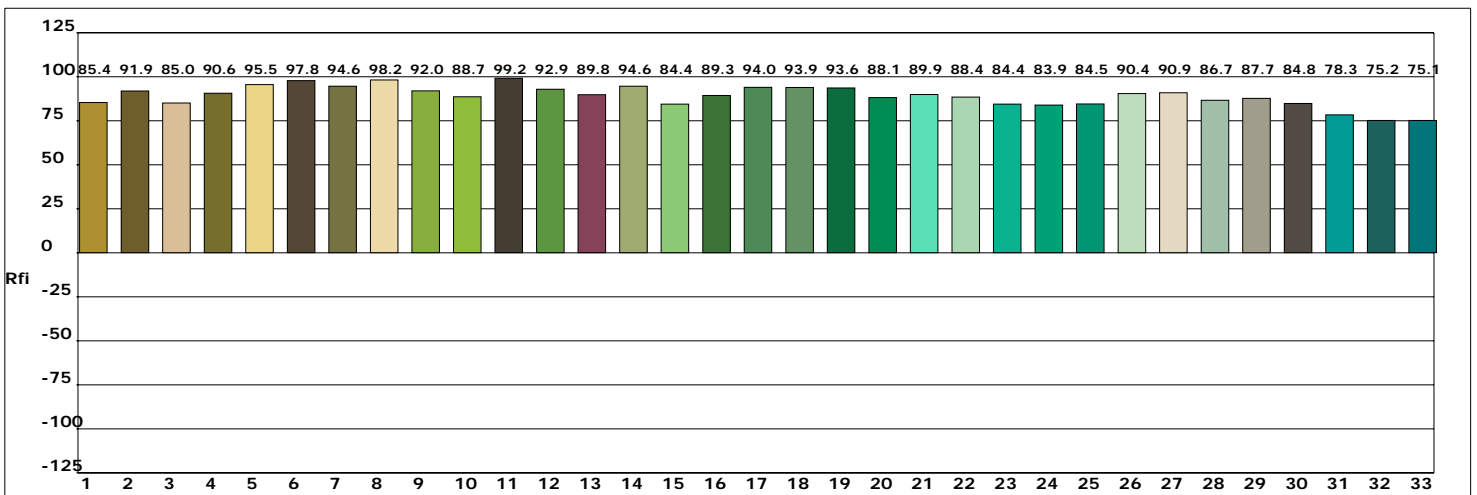
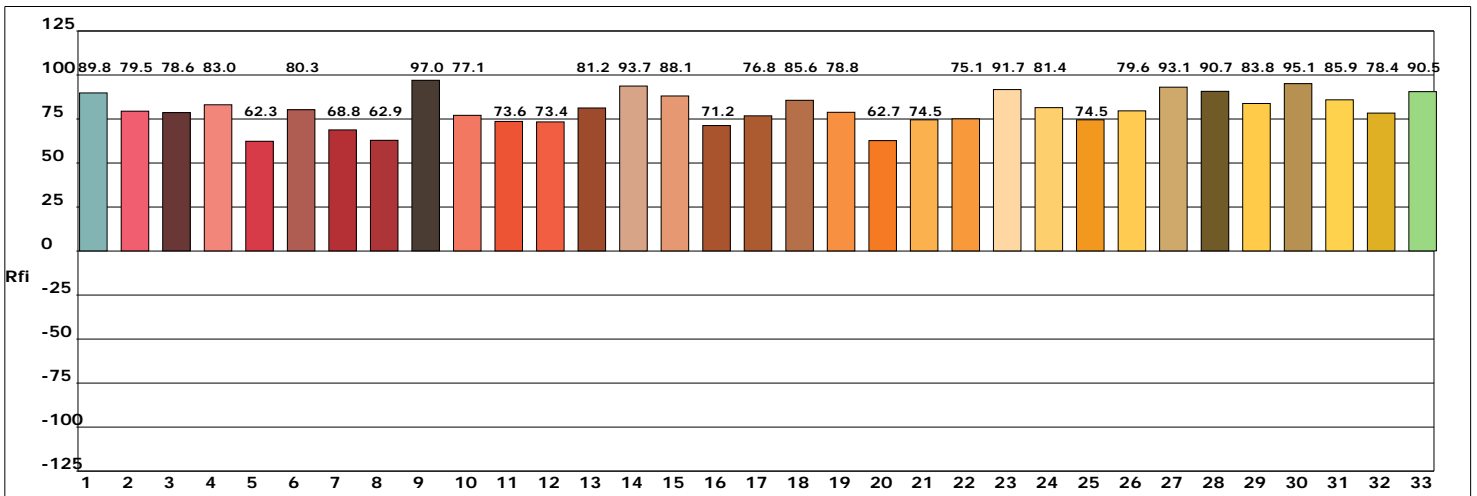
Hue Bin	Rf	Chroma	Hue
1	78.0	-11.9%	-1.0%
2	81.2	-7.6%	6.0%
3	75.0	-4.0%	11.3%
4	86.2	0.7%	7.6%
5	89.6	2.1%	4.3%
6	93.6	2.7%	-1.7%
7	91.0	-3.0%	-3.8%
8	89.0	-5.6%	-1.6%
9	87.1	-6.7%	4.1%
10	77.3	-6.8%	10.2%
11	76.9	1.0%	14.1%
12	81.6	6.0%	6.0%
13	84.4	7.1%	-6.2%
14	86.4	8.3%	-7.3%
15	77.9	-1.1%	-14.0%
16	76.1	-6.0%	-12.2%



Product model: Lisun LMS-6000BL
 Product number: LED
 Tester: Jacky
 Remarks: N/A

Manufacturer: LISUN GROUP
 Test unit: LED
 Date of observation: 20231013

LED Test Report

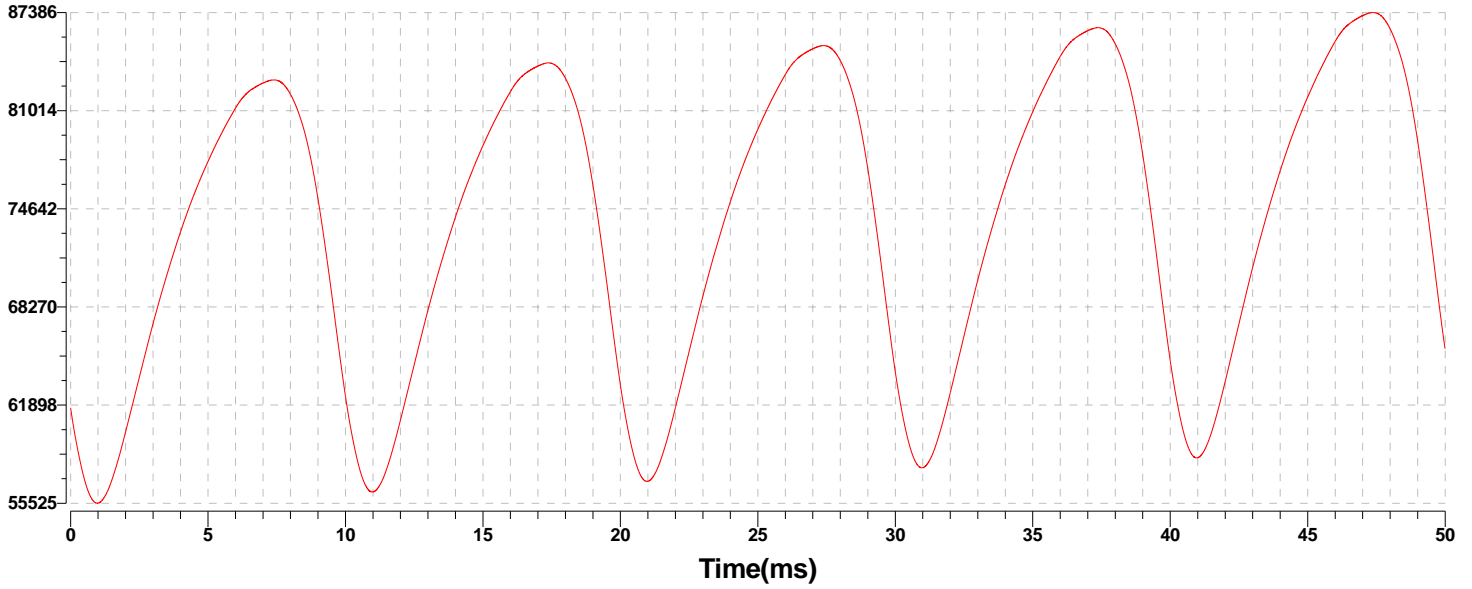


Product model: Lisun LMS-6000BL
 Product number: LED
 Tester: Jacky
 Remarks: N/A

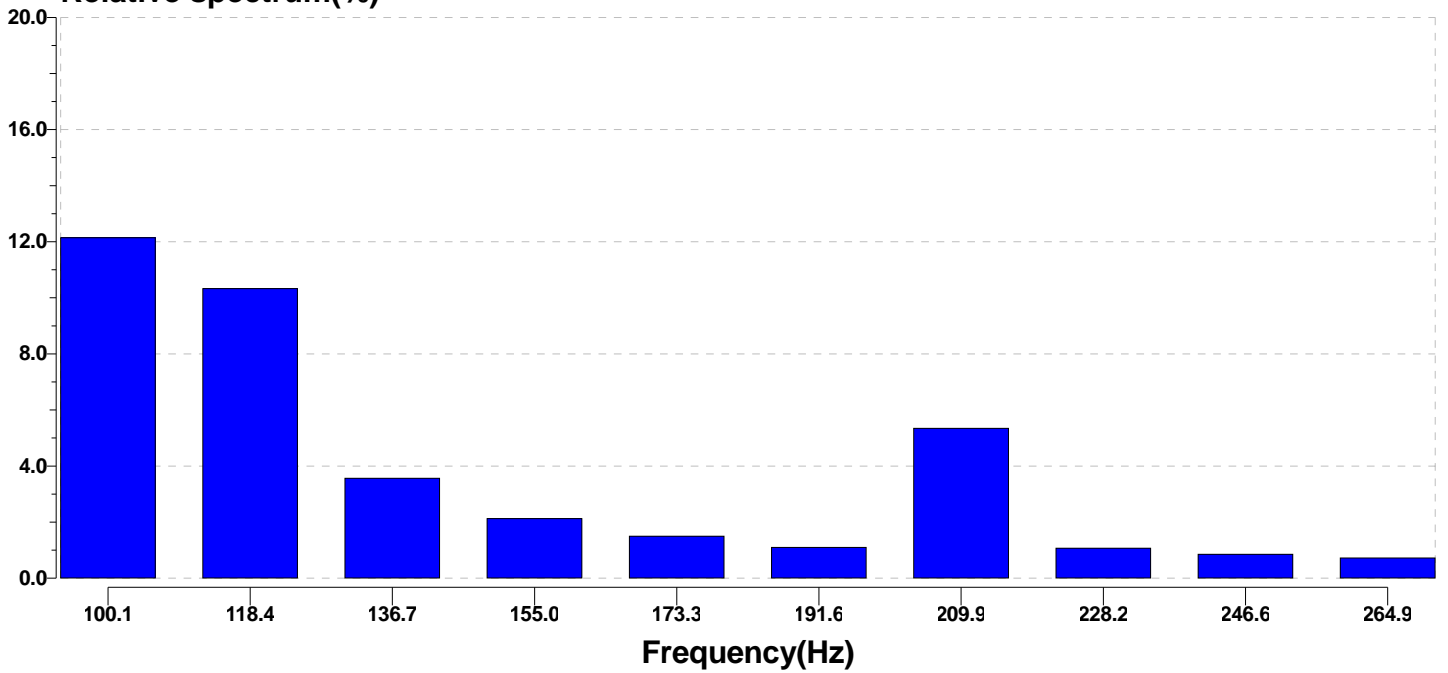
Manufacturer: LISUN GROUP
 Test unit: LED
 Date of observation: 20231013

LED Test Report

illuminance(lx)



Relative spectrum(%)



Product model: Lisun LMS-6000BL
 Product number: LED
 Tester: Jacky
 Remarks: N/A

Manufacturer: LISUN GROUP
 Test unit: LED
 Date of observation: 20231013